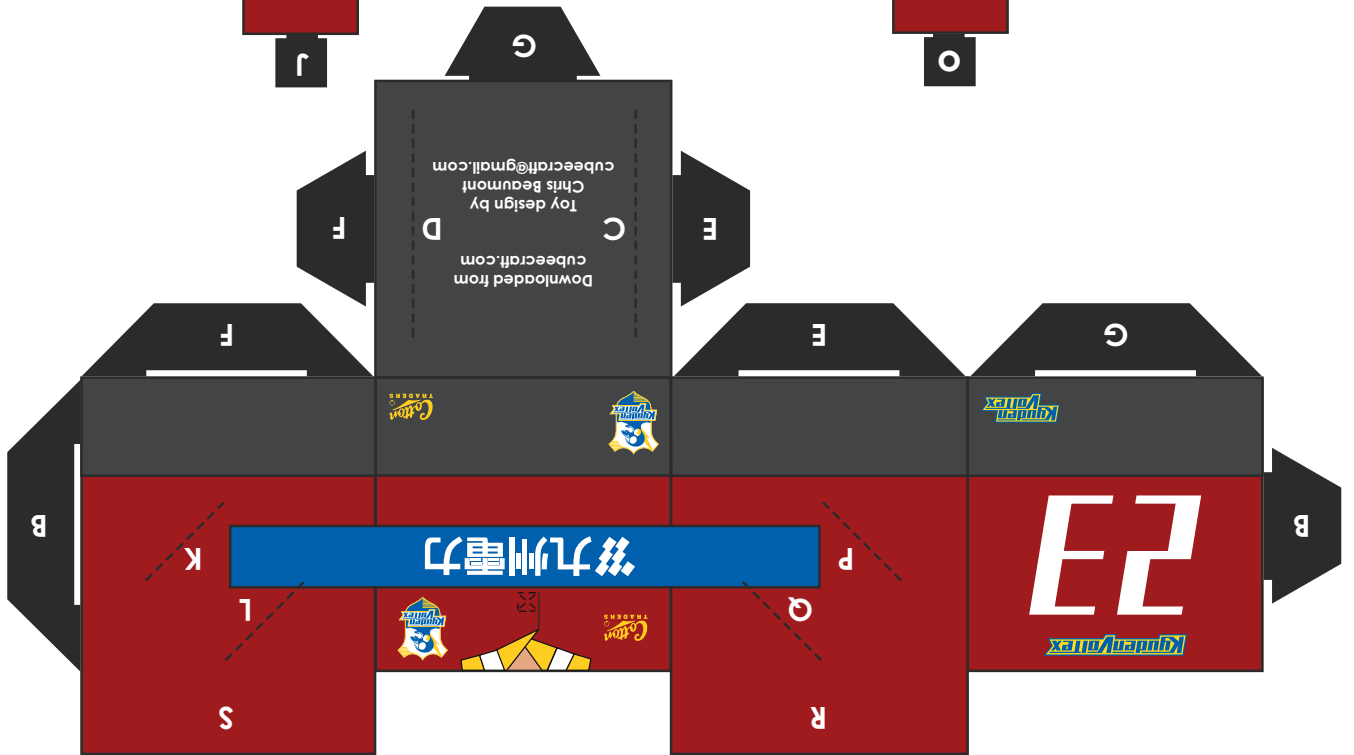
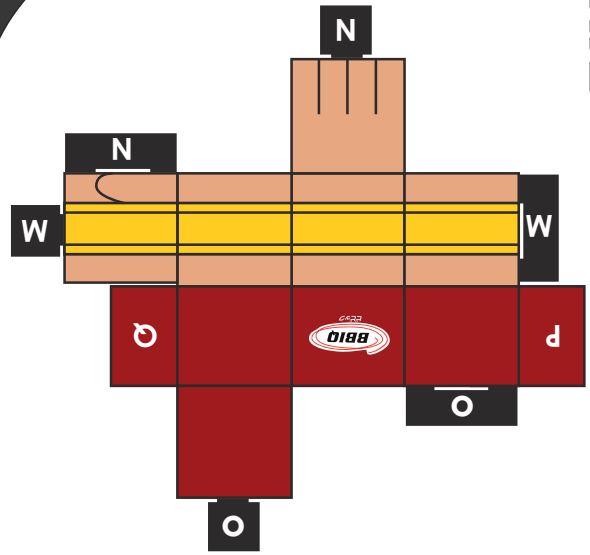
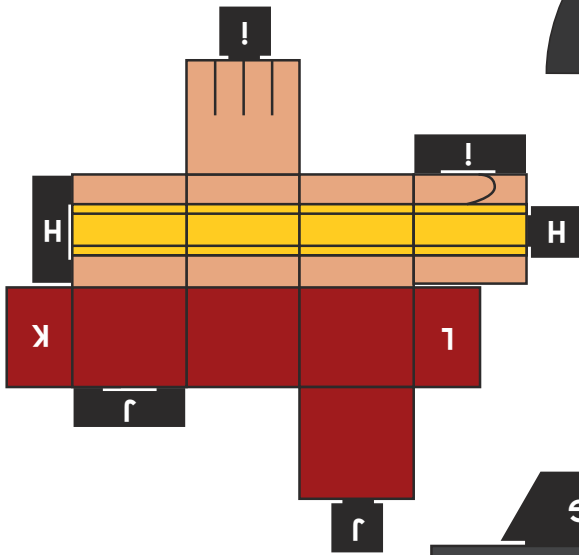
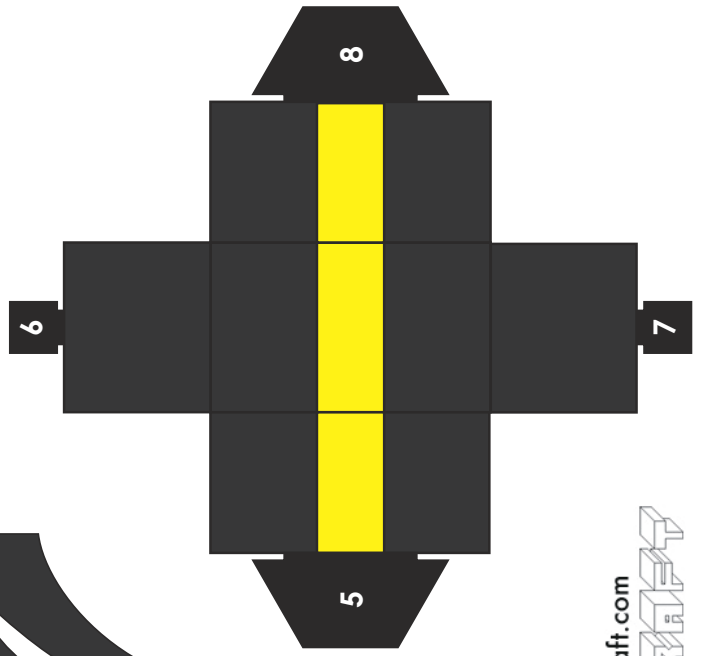
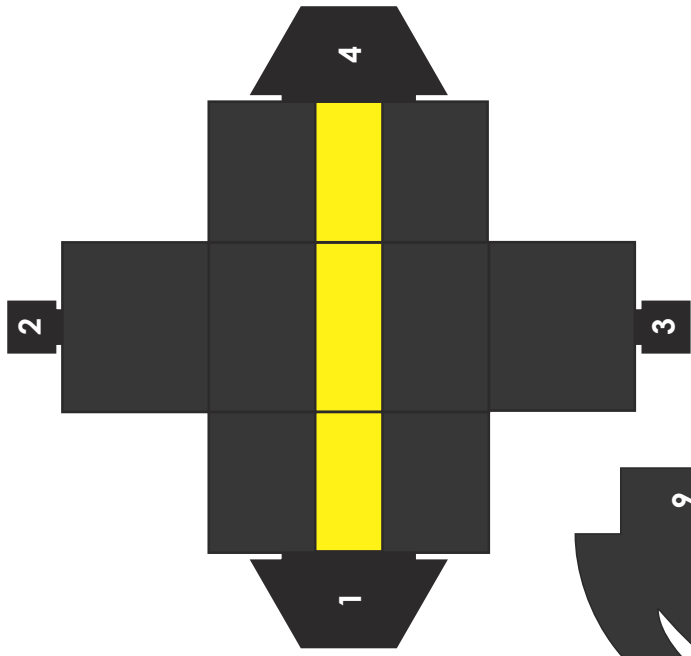
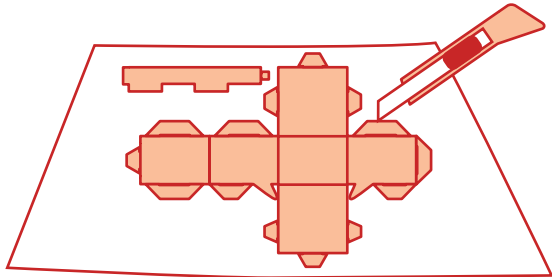


Carefully cut out the shapes on this page.  
 Use a hobby knife to slit the white lines  
 labeled with letters.  
 Tape and glue are not necessary.  
 Thicker paper is recommended.

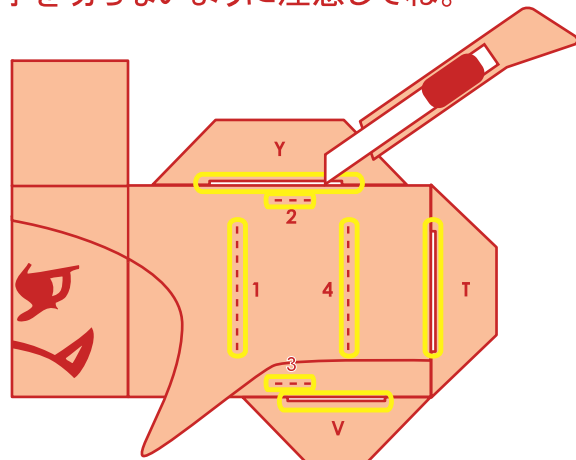


# ペーパークラフトの作り方

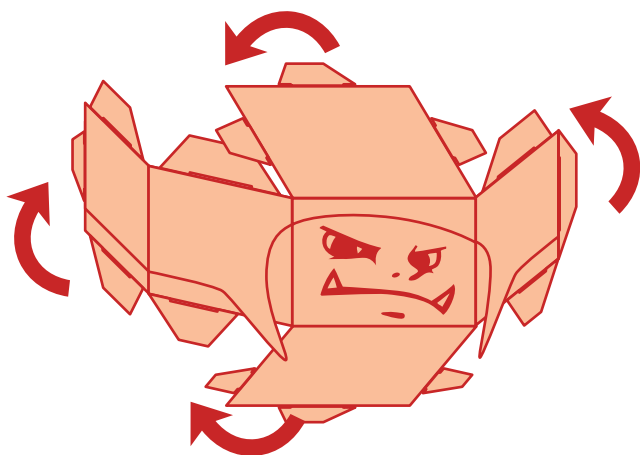
①台紙をA4サイズでプリントし、カッターナイフで切り抜こう！少し厚めの紙がオススメ。



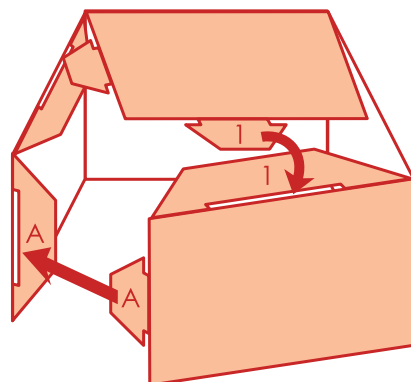
②白い溝と破線に切り込みを入れよう！手を切らないように注意してね。



③切り抜いたパーツを箱型になるように折ろう！



④AはAの溝、1は1の溝に差し込んでいこう！のりやテープはいらないよ。



⑤組み立てたパーツを切り込みに差し、合体させたら完成！！

